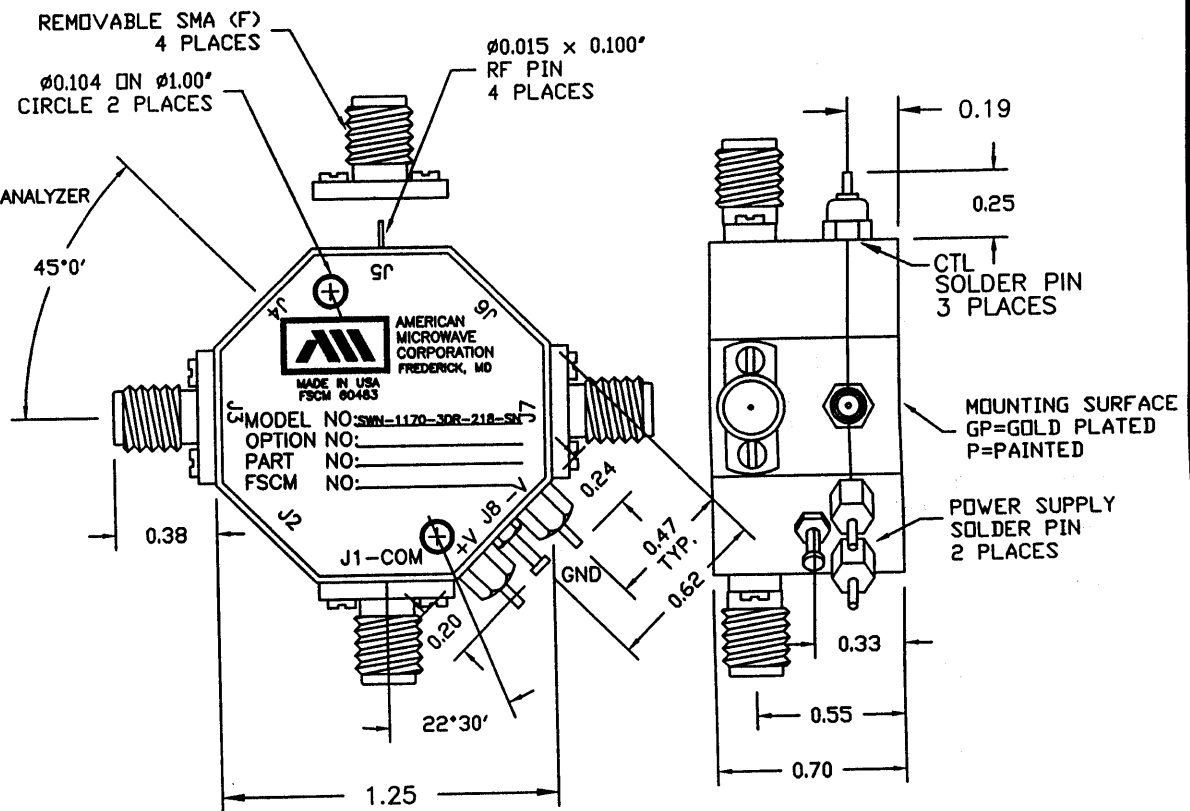


**SPECIFICATIONS:**

- FREQUENCY: . . . . . 2.0 GHz TO 18 GHz
- INSERTION LOSS: . . . . . REFLECTIVE: 3.5 dB MAX, 3.0 dB TYP. IN PORTS WITH LIMITER  
REFLECTIVE: 2.7 dB MAX IN PORT WITHOUT LIMITER
- ISOLATION: . . . . . 80 db MIN
- VSWR: . . . . . REFLECTIVE IN/OUT: 2.0:1
- SPEED: . . . . . DELAY ON: 200ns MAX.  
DELAY OFF: 200ns MAX.  
RISE: 50 ns TYP; 100 ns MAX.  
FALL: 50 ns TYP; 100 ns MAX.
- CONTROL: . . . . . TTL LOGIC (OV=ON, +5V=OFF)
- POWER INPUT: . . . . . -1 dB COMP: +20 dbm
- VIDEO LEAKAGE . . . . . ± 20 mV IN BAND OR -60 dbm OVER SPECTRUM ANALYZER
- NO DAMAGE INPUT POWER IN ON POSITION: 2W (CW)
- NO DAMAGE INPUT POWER IN OFF POSITION: 2W (CW)
- POWER SUPPLY: . . . . . +5V ● 150 mA MAX.  
-12V ● 75 mA MAX. (REFLECTIVE)
- CONNECTORS . . . . . SMA FEMALE ( REMOVABLE )
- TEMPERATURE: . . . . . -54°C TO +85°C (OPERATING)
- SIZE . . . . . 1.25 FLAT TO FLAT x 0.70 (H)
- WEIGHT . . . . . 2 OZ. MAX.
- IN THE OPPOSITE PORT OF J1 THERE IS A LIMITER WITH THE FOLLOWING SPECIFICATIONS// POWER MAX: 1W (100 W GATE OF 1 us AT 1%); 100ns. INSERTION LOSS IN THIS PORT IS 4 db MAX. CONNECTION OF LIMITER IN ORDER TO RECEIVE POWER FROM THIS PORT.

REVISIONS			DATE	APPROVED
ZONE	REV.	DESCRIPTION		
-	-	ORIGINAL RELEASE	1/15/99	



NOTE:  
 DR=WITH DRIVER, REFLECTIVE  
 DT=WITH DRIVER, NON-REFLECTIVE/ABSORPTIVE

**ENVIRONMENTAL RATINGS:**

- TEMPERATURE: . . . . . -55°C TO +85°C (OPERATING)  
-65°C TO +125°C (STORAGE)
- HUMIDITY: . . . . . MIL-STD-202F, METHOD 103B COND. B
- SHOCK: . . . . . MIL-STD-202F, METHOD 213B COND. B
- VIBRATION: . . . . . MIL-STD-202F, METHOD 204D COND. B
- ALTITUDE: . . . . . MIL-STD-202F, METHOD 105C COND. B
- TEMPERATURE CYCLE: . . . . . MIL-STD-202F, METHOD 107D COND. A

ALL DIMENSIONS ARE IN INCHES  
 TOLERANCES:  
 X.XX ±0.020  
 X.XXX ±0.010

NOTE: THE ABOVE SPECIFICATIONS ARE SUBJECT TO CHANGE OR REVISION

CONTRACT NO.		AMERICAN MICROWAVE CORPORATION FREDERICK, MARYLAND	
APPROVALS	DATE	TITLE	
DRAWN K SIMMS	1/15/99	OUTLINE DRAWING SWN-1170-3DR-218-SN PIN DIODE SWITCH	
CHECKED LP	1/27/99	SIZE	REV.
ISSUED WP	1/27/99	FSCM NO. A 60483	DWG NO. 100-4705
SCALE N/S		SHEET 1 of 1	